

proth-pro

simply smile

NEW

Proth-Pro®

The improved application aid for putting on an above-knee prosthesis with suction socket.



Problem definition

Putting on an above-knee prosthesis is a tiresome daily routine that can lead to several problems on the part of the amputee. The better the prosthesis fits on the residual limb, the greater the stability and the mobility of the amputee. However, the prosthesis fits so tightly on the residual limb, that friction can occur between the residual limb and the prosthesis causing a great deal of physical strain on the hands, arms and shoulders when putting on the prosthesis. In addition, the skin on the residual limb is often thinner and more vulnerable and sensitive to friction. Therefore, a proper fit with minimal friction is an important factor when putting on a prosthesis.

Solution

Proth-Pro has been specifically designed to help alleviate the problems associated with putting on a prosthesis. This new device has one single seam what results in a very strong product with an improved lifetime. The product is, of course, made of a light smooth material which minimises friction and, in turn, reduces the pain caused by friction when putting on the prosthesis. As a result the device also reduces the physical strain required to put on the prosthesis. The Proth-Pro can be used in combination with the Proth-Pro Extender which makes it easier to feed the loop through the valve hole.

Target group

The Proth-Pro has been specifically developed for people with an above-knee prosthesis with suction socket.



Extender

Proth-Pro®

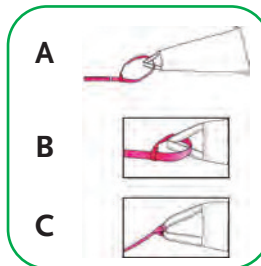
Comfortable putting on a prosthesis

Product benefits

- Innovative design – high quality
- Reduces pain and physical strain
- Ensures a good fit between residual limb and prosthesis
- Minimises friction between residual limb and prosthesis
- Time saving
- Ease of use
- Easy to carry
- Very durable
- Washable by hand with a mild detergent in lukewarm water 30°C

Product range

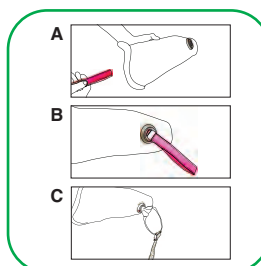
size	circumference (cm)	
	proximal	distal
XS	40	12
S	41–45	13
M	46-58	13
L	59-70	15,5
XL	71–80	16
XXL	81	----
Extender	one size	



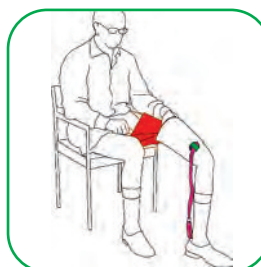
Attach the extender to the loop Of the Proth-Pro



Position the Proth-Pro on the residual limb



Feed the extender through the valve hole



Slide the prosthesis onto the residual limb using the Proth-Pro



Remove the Proth-Pro from the prosthesis